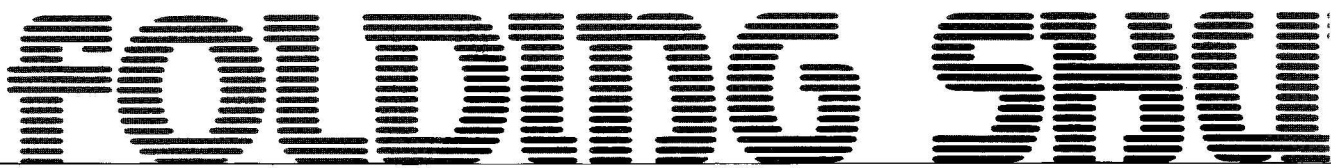


R & M DOOR ENGINEERING LTD

70 Patterdale Road, Heaviley, Stockport SK1 4NL
Tel: 0161 456 0471 Fax: 01204 382546 Freephone: 0800 3283943



FOLDING SHUTTER DOORS



SPECIFICATION

TOP TRACK

The top track supports the weight of the door and is formed from heavy gauge cold rolled steel strip. It is fixed to the lintel with fabricated mild steel brackets where required and is galvanised or painted depending on the door specification and size.

PICKETS

Pickets are formed from galvanised cold rolled steel strip and form the main framework for the door on the inside of the building. The top of each picket is supported from the top track with a hardened steel grease sealed multi ball roller. The bottom of each picket runs within the bottom track and gives the door its immense strength in high winds.

LEAVES

The leaves, which are 230mm (9") wide, are formed from cold rolled galvanised steel strip and are ribbed for aesthetic purposes and extra strength. The gauge varies to suit the size of the door.

HINGE STRIP

The hinge strip is a capped cold rolled galvanised steel outer channel which allows the leaves to hinge vertically and move with the picket section when the door is operated.

LATTICE

The lattice is a unique shape for extra strength and is formed from heavy gauge cold rolled galvanised steel strip. The lattice is bolted onto the pickets and controls the sideways movement of the door and prevents the door flattening out in high winds.

BOTTOM TRACK

The standard bottom track, which is set into the floor, is manufactured from heavy gauge cold rolled steel strip and runs the full length of the door.

LEADING EDGE

The leading edge is for accommodating hasp and staples, locks, handles etc. and stiffens up the front of each door. It is formed into a deep channel from heavy gauge galvanised steel strip.

SOFFITS & SIDE CLOSURES

Heavy gauge galvanised steel strip is press braked to the required size and shape and fixed to the doors and door jambs to give maximum security.

HARDWARE

Each door has a bow handle inside and out and is fitted with a heavy duty hasp and staple which is normally fixed inside unless otherwise specified. The hasp and staple is to take the customer's own padlock.

ELECTRIC OPERATION (when quoted)

The operation is by a 415v 3ph geared electric motor with a manual disconnection for hand use during emergencies. Each motor unit is complete with torque limiter which stops the door at each end of travel and also in an emergency. The starter contains OPEN STOP CLOSE buttons plus a safety thermal cut out switch.

SERVICING AND SAFETY

All doors should be serviced regularly.
Please contact our Service Department after the installation has been completed and we will advise you of our maintenance schemes.
(See overleaf for our 24 hour call-out and repair service)

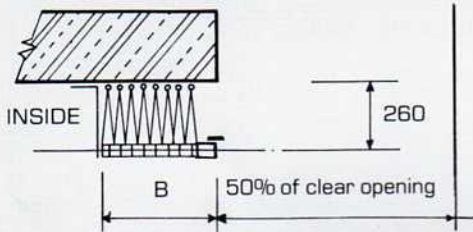
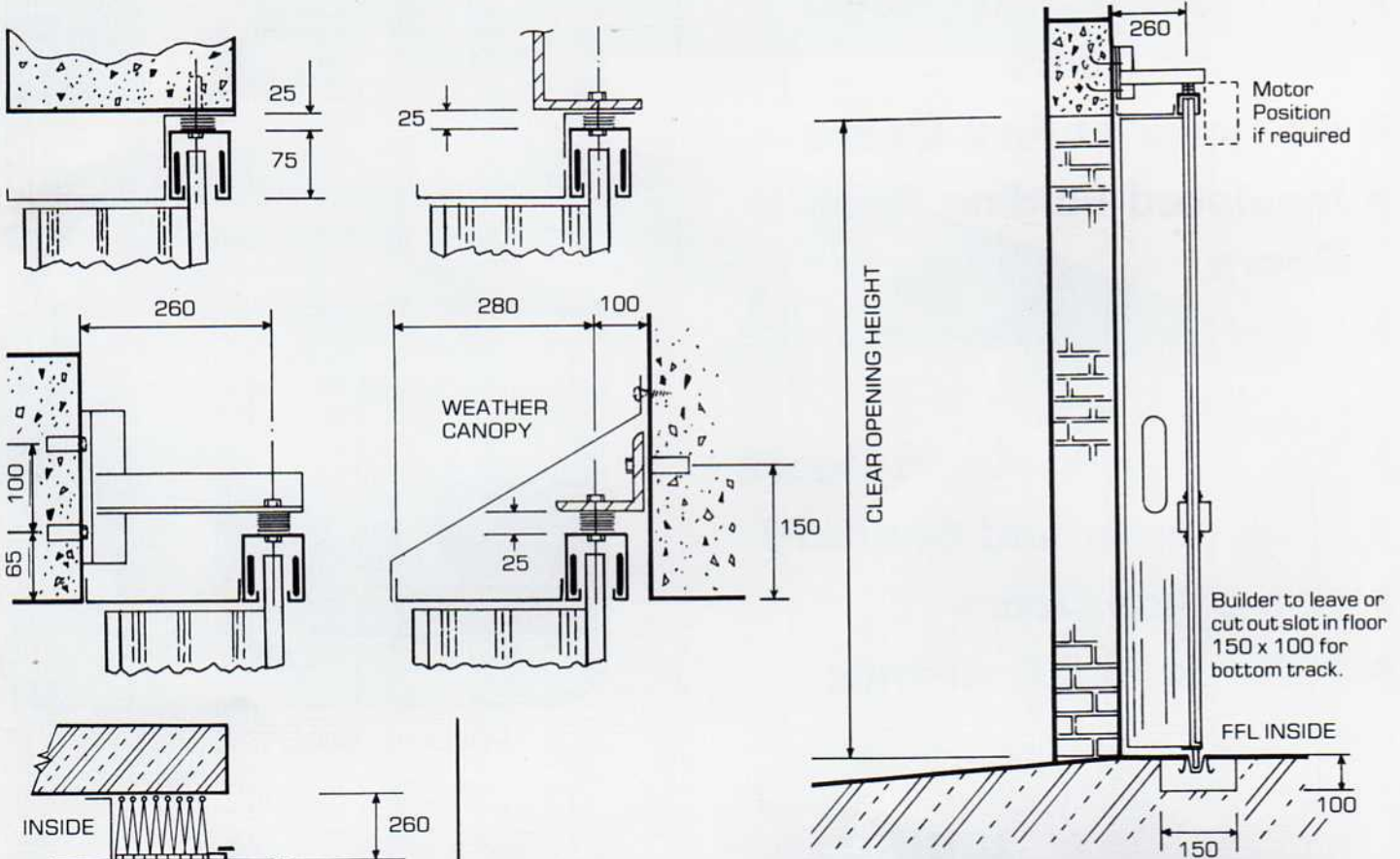
OPTIONAL FEATURES Available at extra cost

Windows · Locks · Plastisol HP 200 colours to face of door · Special application bottom tracks ·
Cut outs for runway beams or monorails · Electric operation · Special motors and starters ·
Special electrical equipment (safety edge induction loops etc) · Wiring to door and commissioning

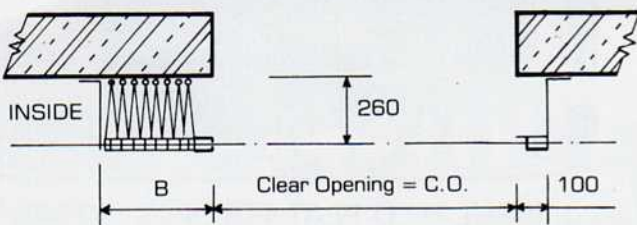
STER DOORS

SOME FIXING ARRANGEMENTS & APPLICATION LAYOUTS

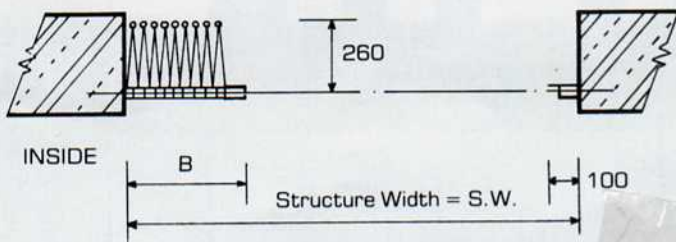
Doors can be fixed inside or outside the opening and can be arranged as Left hand or Right hand, single or pairs of doors.



Plan showing the Left Hand half of a typical pair of doors.



Plan showing a Left Hand single door fixed behind.

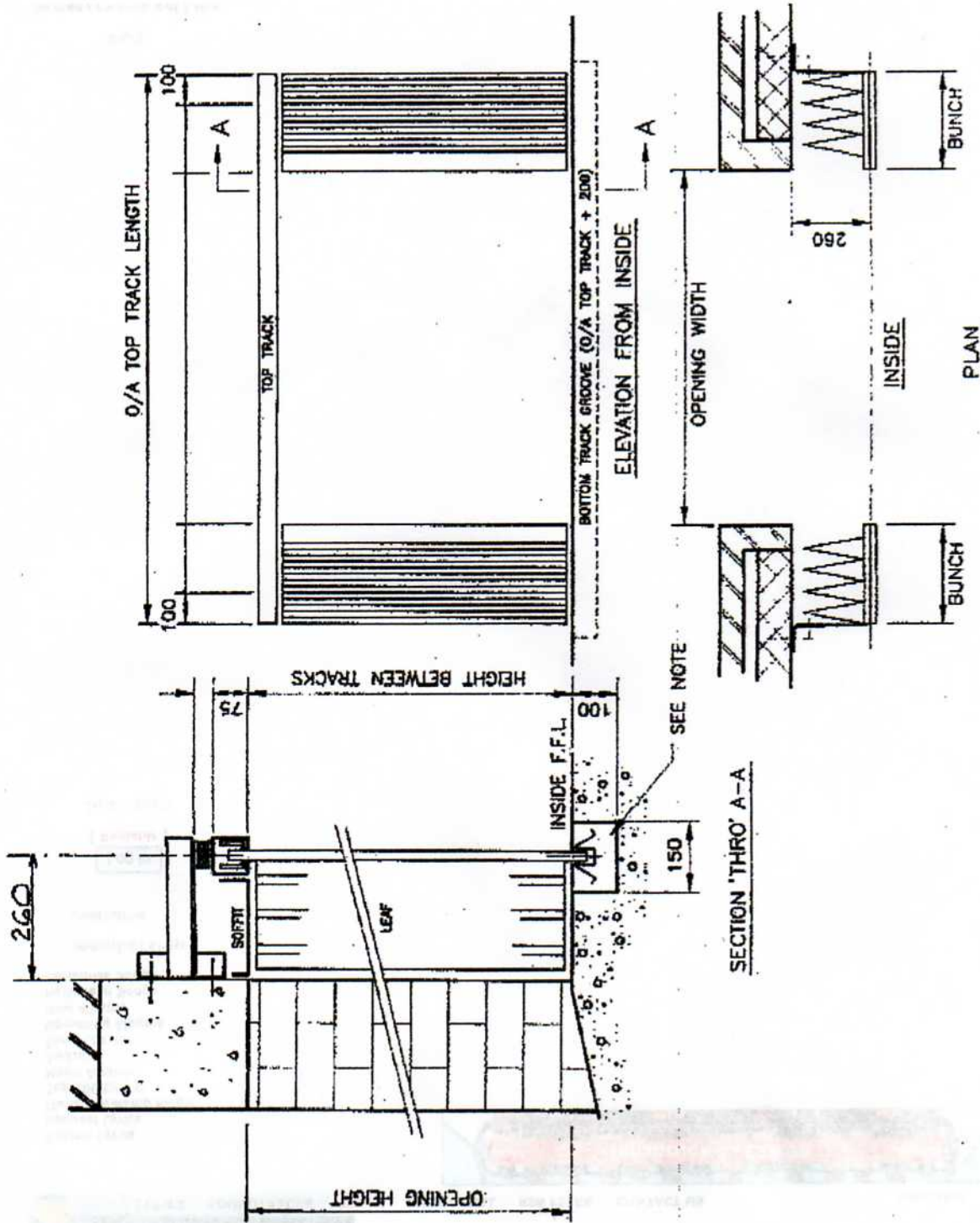


Plan showing a Left Hand single door fixed within opening.

BUNCHING CHART FOR 230mm LEAF			
For Single Doors up to 6000 high x 10,100 clear width			
Door Width Overall SW	Bunching Size B	Clear Opening CO	Number of Leaves in Pairs
1700	225	1475	4
2100	250	1850	5
2500	275	2225	6
2900	300	2600	7
3300	325	2975	8
3700	350	3350	9
4100	375	3725	10
4500	400	4100	11
4900	425	4475	12
5300	450	4850	13
5700	475	5225	14
6100	500	5600	15
6500	525	5975	16
6900	550	6350	17
7300	575	6725	18
7700	600	7100	19
8175	700	7475	20
8575	725	7850	21
8975	750	8225	22
9375	775	8600	23
9775	800	8975	24
10175	825	9350	25
10725	1000	9725	26
11125	1025	10100	27

A pair of doors can be 20,200 clear width. For doors larger than the above sizes please contact our technical department.

DO NOT SCALE



GENERAL NOTES

STRUCTURE OF OPENING MUST BE ADEQUATE TO CARRY THE WEIGHT OF THE DOOR. FSD. APPROX. WEIGHT (32 KG/M²).

A 150mm x 100mm DEEP GROOVE MUST BE PREPARED BY OTHERS PRIOR TO THE ERECTION OF THE DOOR. THIS MUST BE MADE GOOD BY OTHERS AFTER INSTALLATION IS COMPLETE.

DOOR DATA: FSD	Y	N
PAIR (NO. REQD.)		
PADLOCK INSIDE / OUTSIDE		
CHUBB 3M50 LOCK		
HOOKBOLT LOCK		
BRUSH STRIPS TOP		
BRUSH STRIPS BOTTOM		
VISION PANELS		
POWDER COATED		
SUMP BOX		

Site:

Drawing No.

R & M DOOR ENGINEERING LTD

R & M Door Engineering Ltd, 70 Patterdale Road, Heavily,

Stockport SK1 1NL

Tel: 0161 456 0471

Fax: 01204 382546

Drawn: RM

Checked:

Date:

Revisions: